

Erratum

Erratum to “Immature human osteoblastic MG63 cells predominantly express a subtype 1-like CGRP receptor that inactivates extracellular signal response kinase by a cAMP-dependent mechanism”

[Eur. J. Pharmacol. 470 (2003) 125–137][☆]

Tomoyuki Kawase^a, Kazuhiro Okuda^b, Douglas M. Burns^{c,*}

^aDepartment of Signal Transduction Research, Division of Cellular Pharmacology, Graduate School of Medical and Dental Sciences, Niigata University, 2-5274 Gakkocho-dori, Niigata 951-8514, Japan

^bDepartment of Oral Biological Science, Division of Periodontology, Graduate School of Medical and Dental Sciences, Niigata University, Niigata 951-8514, Japan

^cMedical Research Service, Kansas City Department of Veterans Affairs Medical Center and Department of Biochemistry and Molecular Biology, University of Kansas Medical Center, Kansas City, MO 64128, USA

The publisher regrets that Fig. 4 was published with errors. Herewith the correct Fig. 4 is given.

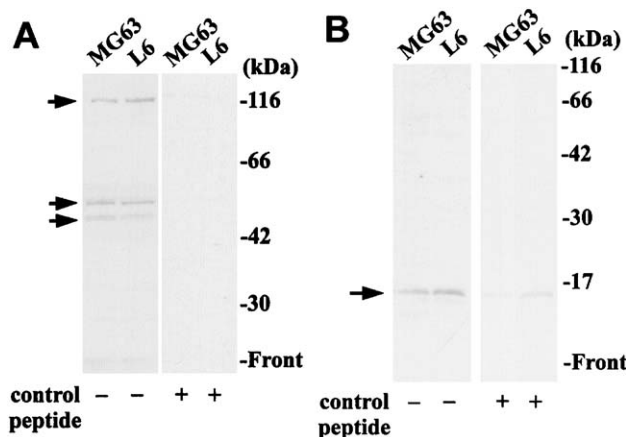


Fig. 4. Western blot analysis of CRLR and RAMP-1 proteins in whole cell samples from MG63 or L6 cells. Cells were directly lysed in the sample buffer and boiled for 1 min. After sonication and centrifugation to remove debris, cell lysates were applied to SDS-PAGE (A: 4–20% gradient gel, B: 10–20% gradient gel) and then immunoblotted using anti-human CRLR antibody (A) or anti-rat RAMP-1 antibody (B). Antibody specificity was verified by competing with the corresponding control peptide antigen, as recommended by the supplier and described under Materials and methods. Experiments were repeated three times, and the results shown here are representative for all these data.

[☆] doi of original article 10.1016/S0014-2999(03)01763-1.

* Corresponding author.

E-mail address: dburns@kumc.edu (D.M. Burns).